

Jan C. Scow Consulting Arborists, LLC

Disease and Pest Diagnosis, Hazard Evaluation, Restorative Pruning Advice, Value Assessment

401 N. Ventura St.
Ojai, CA 93023
(805) 272-8095

7/19/24

Jeb Adams (applicant)
"1651 Lynn Rd. LLC"
6481 Winona Ct.
Oak Park, CA 91377

SUBJECT: Addendum [revised]: Oak Tree Report at 1651 Lynn Road, Thousand Oaks
REFERENCES:

- 1) The City of Thousand Oaks Municipal Code, Article 42. Oak Tree Preservation and Protection, no date
- 2) Resolution No. 2010-014 – Oak and Landmark Tree Protection and Preservation Guidelines, dated 2/23/10
- 3) [REVISED] Oak Tree Report, 9/13/23, Scow
- 4) "Oak Tree Location Map", 9/13/23, Scow
- 5) "Oak Tree Location Map", 6/24/24, Pacific Coast Civil, Inc.

BACKGROUND

The above referenced Report (ref 3) and Map (ref 4) are complete and accurate except for a few minor changes. This Addendum updates those documents in three locations, based on the new site plan I have been provided (ref 5). These changes are summarized below and there is a map cutout showing the protective fencing changes required to reference 4.

ADDENDUM

Changes to lots 15 and 16: The decision has been made to remove two oaks north of these homes. Trees to be removed as a result are oaks 44 and 48. These removals allow the wall north of the homes to extend in a relatively straight line from east to west behind them.

Tree 44 is an 11" diameter coast live oak with fair health and structure at the time of our field survey.

Tree 48 is a 6" diameter coast live oak with good health and structure at the time of our field survey.

The protective fencing will be modified as shown in lavender on the northern edge of the attached map cutout.

Changes in the NE corner of the property: Several changes were made in the area where trees 54-59 are located, including rerouting of the storm drain and the addition of a large bioswale. While this does not remove any additional trees (tree 59 was already to

be removed) it does change the protective fencing as shown in the NE corner in lavender.

Changes south of lot 6: A vegetated swale is now shown in the area south of lot 6. This is a designed swale and will impact soils in that location. While it will not significantly alter impacts to trees in the area, it will require modification of the protective fencing location as shown in the attached map cutout in lavender.

IMPACTS

Tree removals: [pg. 4 ref 3: Change this paragraph to read:]

“The proposed project will cause the removal of 23 protected oak trees to accommodate construction. Oak tree removals are indicated on the accompanying Oak Tree Impacts table and circled in red on the Oak Tree Location Map.”

Tree encroachments¹: [pg. 4 ref 3: Change this paragraph to read:]

“80 of the remaining oak trees will be subjected to some form of encroachment. Impacts from these activities can be kept to a low level if mitigation measures are carefully adhered to. Impacts are addressed in the accompanying Oak Tree Impact table and range in intensity from very minor to, in a few cases, moderate (10 instances).”

MITIGATION

Tree replacement mitigation: [pg. 7 ref 3: Change this paragraph to read:]

“The following replacement plantings are required to mitigate for the 23 oak trees being removed by this project:

46- 24” boxed coast live oak (*Quercus agrifolia*)²

23- 36” boxed coast live oak (*Quercus agrifolia*)

Planting locations will be provided by the project Landscape Architect.”

Oak Tree Impacts Table: [Excel spreadsheet sent as an attachment to ref 3 Change as follows:]

Tree 44: Change impact to “Remove”

Tree 48: Change impact to “Remove”

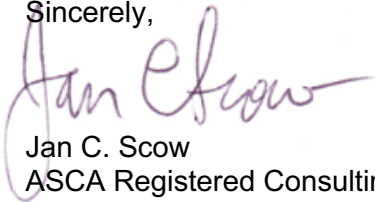
As stated previously, impacts to remaining oaks will not change appreciably.

¹ Based on the new plans that I reviewed on 7/3/24, impacts to the oak trees are hereby confirmed to remain at 80 as stated above. None of the design changes have materially affected the impacts to the remaining trees.

² Note that species recommended are my opinion of what should be planted. Obviously, the City can choose to plant non-native oaks if the wish.

Please let me know if I can be of any further assistance or if you have any additional questions. My goal is to satisfy my clients and help them to better care for their trees in the most effective way possible. I look forward to working with you toward that goal!

Sincerely,

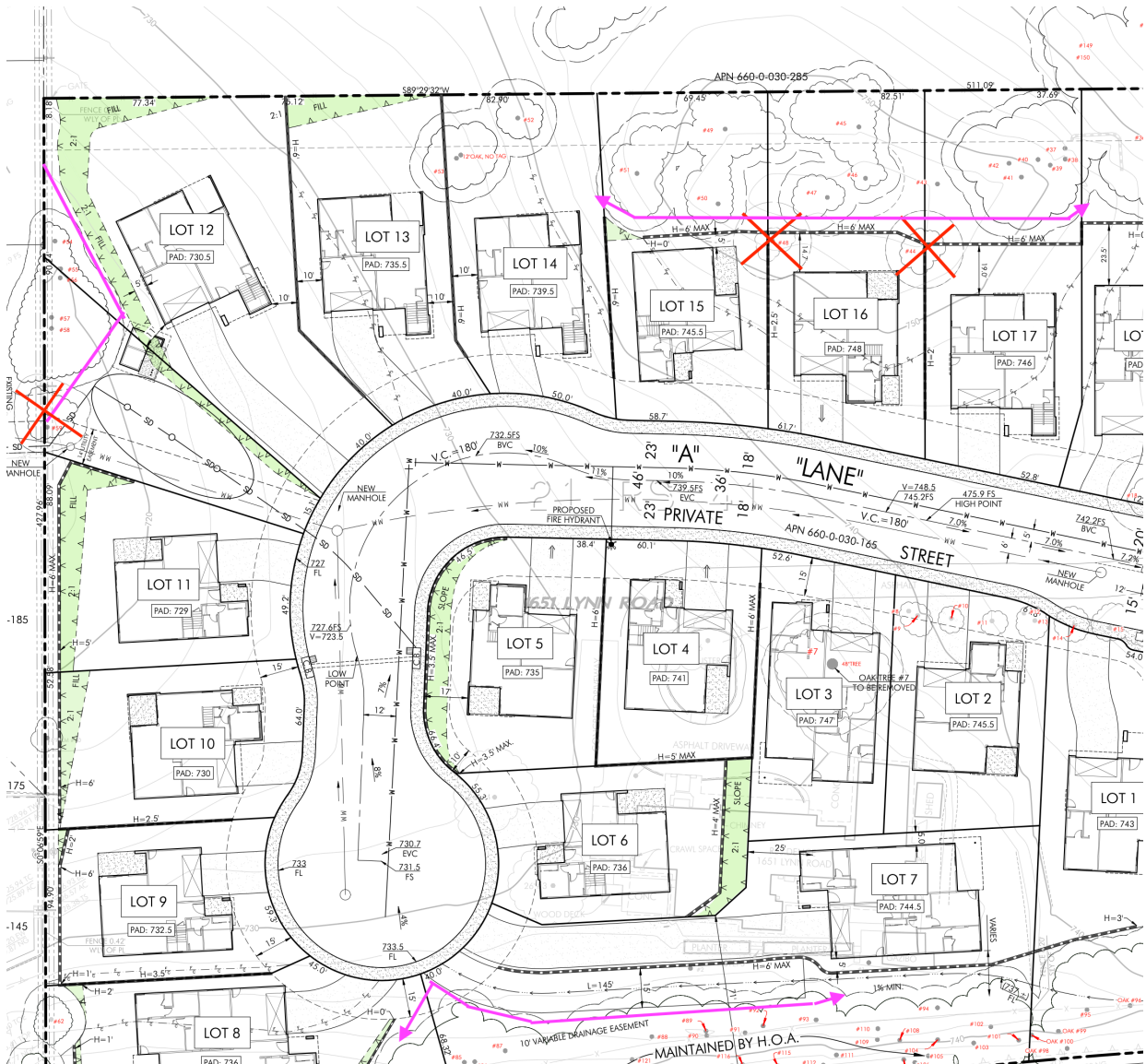


Jan C. Scow
ASCA Registered Consulting Arborist #382
ISA Board Certified Master Arborist #WE-1972B



Attached: Map cutout showing protective fencing changes and 2 additional removals.

Fencing changes and removal of trees 44 and 48



Fencing changes are shown in lavender.

Tree removals are shown as red X's (note that tree 59 is not a new removal).